

SÉPAQ

# PARC NATIONAL D'AIGUEBELLE

Protected area. Enriching nature experiences.

A true natural gem in the heart of Abitibi, the Parc national d'Aiguebelle is an exceptional place that gives off an aura of peace, contemplation and adventure.

Explore the vast Loïs lake by kayak...discover our magnificent infrastructures offering incredible views... attend our famous discovery activities...It's up to you to choose the perfect stay!

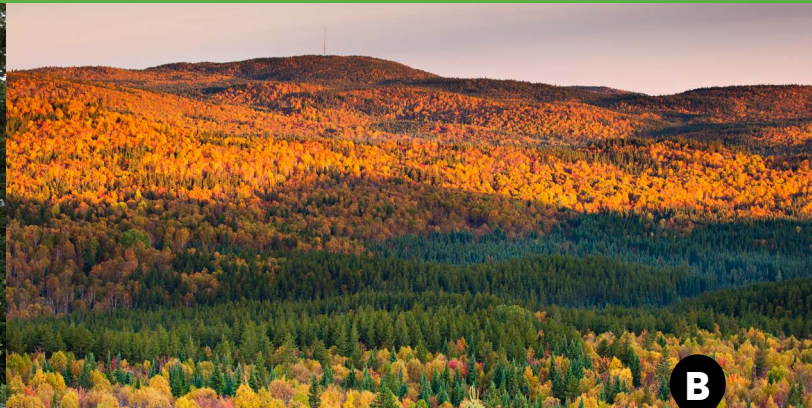
# OUR TEAM'S FAVOURITES



A

## Stay at the “Le Patineur” Rustic Shelter

Live an unforgettable experience while reconnecting with nature at this rustic shelter that will allow you to explore fascinating lac Patrice in total tranquility. Will you be lucky enough to fall asleep to the call of the wolves who roam this sector?



B

## The breathtaking view of the *Mont-Dominant*

*Mont-Dominant* is one of the highest peaks in Abitibi-Témiscamingue. The latter offers a breathtaking view in the center of the Abijévis hills. Its elevation, as well as its breathtaking landscapes will definitely make you hear beat faster!



C

## Discover the Paysages trail

This path reveals landscapes of unsuspected beauty. Thanks to the belvederes, a spiral staircase running along a vertiginous escarpment, a Japanese bridge and a floating walkway, you won't miss the incredible spectacle that nature has to offer you.



D

## Challenge the suspended bridge

The Traverse trail offers a breathtaking view of the rocky escarpments of Lac La Haie. Discover this fascinating setting from a different angle with hourly or half-day canoe rentals.



E

## Exploring the vast Lois Lake

A favorite of our water sport enthusiasts, Lake Lois is sculpted by multiple bays and dotted with numerous islands that calls you to adventure. Canoe-camping, fishing or kayaking, Lois Lake is worth the detour.



F



## Wonderful Winter Slide

After a fabulous family hike on one of our winter trails, come experience a whole array of emotions while trying our winter slide found in Camping Abijévis. Fun is absolutely guaranteed, as much for the kids as for adults!

# DISCOVER OUR TRAILS

		LENGTH AND DURATION*		DIFFICULTY	ELEVATION (METERS)	POINT OF DEPARTURE
	<b>La Castorière</b> – High concentration of beaver habitat around the pond.	1 km loop	20 min	E	0 m	Discovery and Visitors Center
	<b>La Salamandre</b> – Path through the boreal forest and sections of windfall.	4 km round-trip	2 h	I	40 m	Discovery and Visitors Center
	<b>L'Escalade</b> – Hike to the peak of La Trompeuse hill.	2 km round-trip	1 h 30	D	180 m	Lac La Haie parking area on road 26
	<b>La Traverse</b> – Cross over Lac La Haie on a suspended footbridge.	3,5 km loop	1 h 30	I	160 m	Lac La Haie parking area on road 26
	<b>L'Aventurier</b> – Loop around Lac La Haie on rocky escarpments.	9,5 km loop	4 h 30	D	180 m	Lac La Haie parking area on road 26
	<b>Le Garde-Feu</b> – Climb the fire warden tower and discover a period of history.	2 km round-trip	1 h	I	110 m	Garde-Feu parking area on road 24
	<b>Le Mont Dominant</b> – Breathtaking view. One of the highest summits in Abitibi-Témiscamingue.	8 km round-trip	3 h 30	D	370 m	Mont Dominant parking area on road 24
	<b>L'Élan</b> – Panoramic view of Lac Patrice and the Abijévis hills.	1 km loop	45 min	I	65 m	Lac Patrice parking area on road 24
	<b>Les Versants</b> – Succession of valleys and natural viewpoints overlooking the rocky escarpments.	12 km round-trip	6 h	D	110 m	Lac Sault parking area on road 12
	<b>Les Paysages</b> – Spiral staircase and rocky escarpments.	2 km loop	1 h	I	110 m	Lac Sault parking area on road 12
	<b>Le Petit-Nomade</b> – Winding trail through the woods near Lac Lois.	2,5 km loop	1 h	E	40 m	Taschereau Visitors Center

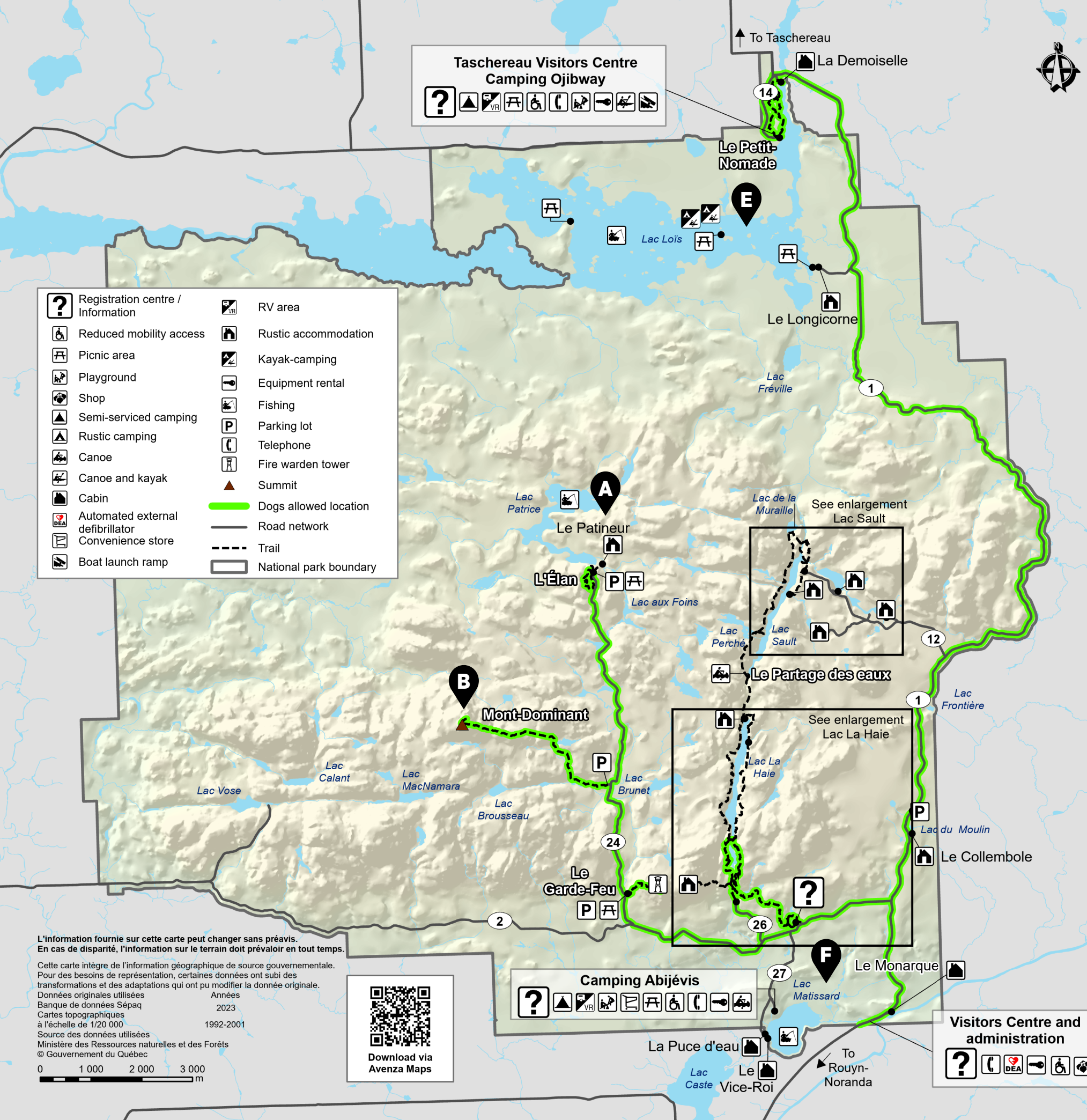
## COMBINE MULTIPLE TRAILS!

	<b>Les Escarpements</b> – Castorière → Salamandre → Traverse → Salamandre → Castorière	8 km loop	3 h	I	160 m	Discovery and Visitors Center
	<b>La Trompeuse</b> – Castorière → Salamandre → Escalade → Escalade → Salamandre → Castorière	8 km round-trip	3 h	D	100 m	Discovery and Visitors Center

 Hiking  Interpretation panel  Family-friendly  Dogs allowed - [sepaq.com/animals](https://sepaq.com/animals)

**E** : Easy    **I** : Intermediate    **D** : Difficult    \*Duration and difficulty levels mentioned are indicative and refer to the summer season.





L'information fournie sur cette carte peut changer sans préavis.  
En cas de disparité, l'information sur le terrain doit prévaloir en tout temps.

Cette carte intègre de l'information géographique de source gouvernementale.  
Pour des besoins de représentation, certaines données ont subi des transformations et des adaptations qui ont pu modifier la donnée originale.

Données originales utilisées  
Banque de données Sépaq  
Cartes topographiques  
à l'échelle de 1/20 000

Années  
2023  
1992-2001

Source des données utilisées  
Ministère des Ressources naturelles et des Forêts  
© Gouvernement du Québec

Download via  
Avenza Maps

**Scale:** 0 1 000 2 000 3 000 m

## DISCOVERY TIME

ESCAPE AIGUEBELLE

# L'OISEAU RARE

### Escape game, L'Oiseau rare

Try our outdoor version of the escape games. With family or friends, all your neurons will be called upon to solve the puzzles of the game. Will you manage to prevent the disappearance of the species?

**Price: \$25 per group.** Reservations in certain schedules. Activity offered under certain conditions. Taxes not included in pricing. Activity available in french only.

### The Garde-Feu trail

Put yourself in the shoes of a fire ranger for a short hike! As you climb, a series of panels will introduce you to the way of life of the fire guard. This path will lead you to the famous tower, where the view of the landscapes is magnificent!

For safety reasons, you must be 12 years and older to climb the tower.



### Family Experience Yippee, it's absolutely free!

For kids 17 years of age and under, access, accommodations, and certain equipment loans are free of charge.

The offer varies from one establishment to another.



### Totor the Beaver, animal emblem of the Parc national d'Aiguebelle

Apart from humans, beavers are the only animals who adapt their environment to fit their lifestyle. For Totor and his kind, the territory of Aiguebelle is the ideal place of settlement with its 80 lakes and 280 km of streams. There are 6.6 colonies per 10 km<sup>2</sup> in the park, one of the highest densities of beavers in Québec.



Canoe-camping at Lac Loïs, a unique experience!



### ***J'ai vu le loup, le renard et le coyote***

A favorite discovery activity to see with children



### **Discovery activity - *Lumière sur les étoiles***

Half of life is during the night! Have you ever thought of that? The Parc national d'Aiguebelle, with the support of Parc national Mont-Mégantic, is currently studying the amount of light emitted from natural and artificial sources every minute of the night. Thus, we will follow its evolution through the years. Thanks to this data and to corrections to the level of lighting in the park, Aiguebelle is working to become a national dark-sky park, certified by the IDA (International Dark-sky association).

Do you want to contribute to collective efforts to preserve the starry sky? Or simply learn more about the fascinating world of stars? Then take part in our *Lumière sur les étoiles* discovery activity!



### **Winter in the park**

Ski-shoeing, snowshoes, snow scooters, fatbikes and tube slides are all ways to discover the splendor of the park's landscapes in winter. Extraordinary snow conditions are created by the presence of the Abijévis hills. Baggage transportation is offered from the Discovery and Services Center for visitors staying in lodgings (additional cost). Don't miss our famous evening hikes along the illuminated trails.



### **IN THE WILD, YOUR SAFETY IS YOUR RESPONSIBILITY**

#### **Outdoor activities can involve certain risks.**

Always be sure to have the skills and abilities required for the activity you choose. It is very important to find out about the risks involved in the activity, to know and respect your own limits and to use appropriate equipment. Preparing yourself adequately is the first step in the safe and enjoyable practice of your favourite activities.

**For more information, visit our website at [sepaq.com/security](http://sepaq.com/security)**

### **DISCOVERY ACTIVITIES**

**Consult the program to enrich your visit.** (in French only)

You will find entertaining activities to explore the park from every angle.



# CONSERVE FOR TOMORROW



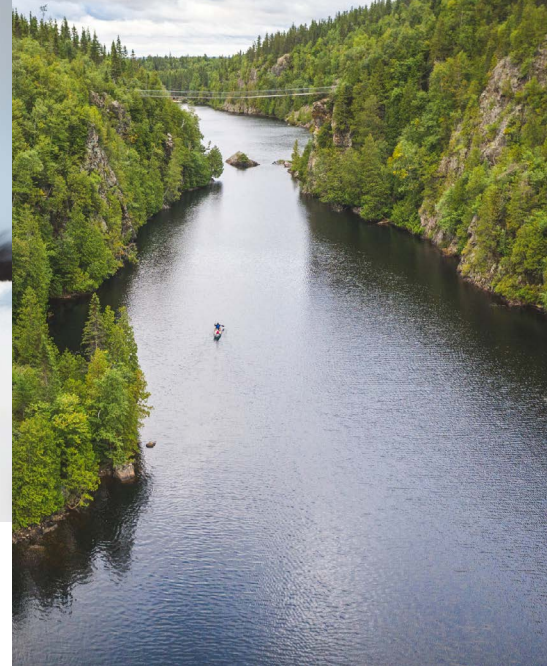
## Where is the wolf?

Some of you have maybe already had the chance to hear or see one during the course of one of your stays. The wolf is certainly present at parc national d'Aiguebelle, but we have little data on the state of health of the wolf population. How many individuals visit the parc? Is this number stable over time? Is the territory shared by multiple packs or is it the domain of one single pack? Do they reproduce in the park? Is there any hybridization with coyotes? These are just some of the questions the Park's conservation team will be working to answer over the next few years through a research project that will begin in 2023.



## Winter, a season fully alive

Did you know that in order to survive the rigours of winter, animals use a variety of strategies. Many species of birds migrate to the South, but most animal species aren't equipped for such a long voyage. Some hibernate while others remain quite active. Most small mammals, such as voles, must take refuge under the snow where they dig networks of tunnels to take shelter from the inclement weather. This underground space is also used by their predators, like the American marten and the ermine, who have very elevated metabolic needs and for whom prolonged exposure to the cold could seriously compromise their survival. Once the snow is too compacted or when there have been freeze-thaw cycles with the formation of ice in the soil, this can create significant barriers and considerably harm small mammals. So, the next time you are out in the forest, stay on the trail to keep compacted surfaces to a minimum. Never forget, winter is teeming with life!



## Water bodies to Protect

Did you know that parc national d'Aiguebelle is known for being right on the watershed line? Since the Park protects lakes with headwaters flowing into the two great provincial watersheds, it is the Park's responsibility to ensure their integrity. In order to prevent invasive species, such as the Eurasian watermilfoil or the spiny water flea, from finding a home in our lakes, a new rule forbidding boats that haven't been washed from entering our lakes will be progressively introduced throughout the summer of 2023. We hope, through this initiative, to educate users of our water bodies and that you will be numerous to adopt good habits such as boat maintenance at all times, regardless of the water body you're visiting.



**Discover what's happening behind the scenes** Stars in your eyes, birds songs in your ears... Dive into the fascinating world of initiatives to protect our natural treasures. (in French only)

[sepaq.com/lenversdudacor](http://sepaq.com/lenversdudacor)

## Our national parks

Given the millions of visits to our national parks annually, harmful behaviors can cause permanent damage to the environment and negatively impact the experience of other visitors. Let's do our part to care for these extraordinary nature sites so we can all enjoy them for years to come.

### 5 GOOD PRACTICES TO ADOPT IN NATURE

- Stay on trails and in designated visitor areas**  
Taking shortcuts can destroy vegetation.
- Do not gather dead wood\***  
To preserve the natural environment, it is prohibited to remove natural elements, including animals, plants, dead wood, and rocks.
- Do not feed wildlife\***  
Feeding wildlife negatively impacts their natural feeding habits. Keep all food out of reach of animals.
- Keep your distance when observing wildlife**  
When animals are repeatedly disturbed, their natural behaviors can change, and they can develop problems to feed, find a mate, and communicate among themselves.
- Respect the peace and tranquility, and comply with curfews**  
People come to national parks to relax and enjoy nature. Please respect curfews and avoid playing music at all times.

\*Failure to comply with rules governing parks and authorized activities is considered a violation of the Parks Act and Parks Regulation.

Pictures : Steve Deschênes, Mathieu Dupuis, Pierre Bernier, Jean-Pierre Huard, Yan Kacznski, Hugo, Lacroix, Luc Farrell, Benoit Chalifour, Hooke, Éric Deschamps, Julie Audet

Parc national d'Aiguebelle

[sepaq.com/aiguebelle](http://sepaq.com/aiguebelle)